



Is silage wrap disposal a challenge for you?

Plastic is great for sealing silage, but once used is a problem to dispose of and up until now, options have been limited.

- Burning is illegal
- Storage on farm is an eyesore, taking up space and a health hazard
- Plastic does not break down so burying it is not an option
- Dumping is a littering offence
- Disposal at the local landfill (tip) or Transfer Station costs money

Fortunately there is another option, and with your help, silage plastic can be recycled.

But there are a few things you need to do first - read this brochure to find out more.



On Farm Collection Service for silage wrap and other agricultural plastics including silage pit wrap, shrink wrap, sausage wrap and bunker cover.
 Contact either the Cohuna Office on 5456 2500 or Swan Hill on 5033 0330 for more information or to arrange a service.

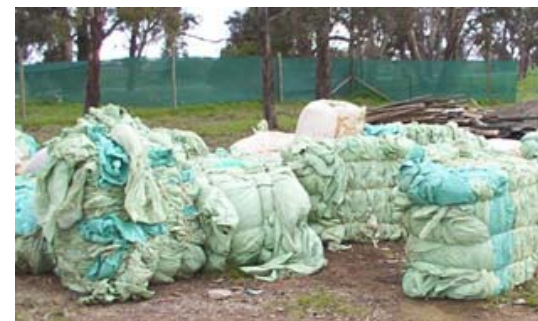
Drop-Off Point Opening Hours

<u>Barham Transfer Station</u> Sunday, Tuesday, Thursday	12 noon to 5.00 pm
<u>Birchip Landfill</u> Monday and Friday Wed 9 am to 12 noon	2.30 pm to 5.30 pm Sunday 10 am to 5 pm
<u>Boort Landfill</u> Mondays 10.00 am to 2.00 pm Saturday 8.00 am to 12 noon	Wed 1.30 to 5.30 pm Sunday 1 pm to 5 pm
<u>Charlton Landfill</u> Mon, Wed, Fri 2 pm to 6 pm	Sunday 9 am to 5 pm
<u>Cohuna Transfer Station</u> Tuesday and Friday Sunday	10.00 am to 2.00 pm 1.00 pm to 5.00 pm
<u>Goodnight Landfill</u> Sundays Wednesdays	10.30 am to 12.30 pm 3.00 pm to 5.00 pm
<u>Kerang Transfer Station</u> Tuesday and Friday Sunday	10.00 am to 2.00 pm 1.00 pm to 5.00 pm
<u>Koraleigh Landfill</u> Sundays Wednesdays	2.00 pm to 5.00 pm 9.30 am to 12.30 pm
<u>Newbridge Landfill</u> Mondays Wednesdays Sundays	10.00 am to 2.00 pm 1.30 p. to 5.30 pm 9.00 am to 5.00 pm
<u>Pyramid Hill Landfill</u> Tuesday 1.30 pm to 5.30 pm Saturday 8 am to 12 noon	Friday 10 am to 2 pm Sunday 1 pm to 5 pm
<u>Serpentine Landfill</u> Monday and Thursday Sunday	2.30 pm to 5.30 pm 10.00 am to 2.00 pm
<u>Swan Hill Landfill</u> Sunday to Friday Saturday	9.00 am to 4.00 pm 9.00 am to 2.00 pm
<u>Wakool Landfill</u> Wednesday & Sunday	1.00 pm to 5.00 pm

For more information about recycling silage wrap in the Central Murray region, contact:

Donna Wardlaw, Regional Education Officer
 Central Murray Regional Waste Management Group
 PO Box 144, Wedderburn VIC 3518
 Phone 03 5465 3102 Fax 03 5465 3467,
 Email: education@cmrwmg.com.au
 Internet: www.cmrwmg.com.au

Did you know...



... you can now
 recycle your
 silage wrap in the
 Central Murray
 region?



Central Murray Silage Wrap Collections

Farmers in the Central Murray region can now recycle their silage wrap (including pit wrap and sausage wrap).

You have two options - collect and deliver your used silage wrap to one of thirteen convenient drop off points in a bale for no charge or engage Ellwaste who will provide a comprehensive on farm collection service (charges apply).

Before your silage wrap can be recycled, there are a couple of things you need to do. After you have fed out your silage:

Shake the wrap to get rid of excess soil, stones and silage contamination

Roll each bale wrap into a tight ball about the size of a football and place it into a storage pack such as a wool bale.

Approximately 80 rolls will fit into an unpressed wool pack.

Store in a clean, dry site on the farm.

Once your wool bale is full, either deliver it to one of the locations listed on the back of this flyer at no cost provided it is clean and in a bale or contact Ellwaste to arrange collection (charges apply).

Some things to remember

- Only clean, dry material will be accepted
- It is critical the plastic is not contaminated - no steel, stones, PVC plastic, excess soil or plant material.
- Any tape used to patch holes in silage bales must be made from the same material or removed prior to recycling

What is it recycled into?

Silage wrap is made of a high quality linear low density polyethylene (LLDPE) plastic and can be recycled into:

- Irrigation/dam linings (mixed with tyre rubber)
- Trickle irrigation and low pressure pipe
- Roadside/garden furniture
- Plastic pellets
- Vineyard stakes/oyster poles

Silage wrap is able to be recycled many times without breaking down, but any contamination can reduce the quality of the material.

It will also make the collection program too costly to continue. So your commitment to deliver suitable materials is important.



Other Farm Waste Recycling initiatives in the Central Murray region

In addition to the silage wrap recycling program, Central Murray farmers can also recycle used chemical containers, scrap metal, waste oil, and household recyclables.

Scrap Metal - Council Landfills/Transfer Stations in the Central Murray region accept uncontaminated scrap metal for recycling (a small fee may apply in some instances).

drumMUSTER - there are 22 permanent drumMUSTER collection sites in the Central Murray region accepting clean empty chemical containers during landfill/transfer station opening hours.

Locations are: Barham, Birchip, Boort, Charlton, Culgoa, Donald, Goodnight, Inglewood, Kerang, Koraleigh, Manangatang, Moulamein, Newbridge, Pyramid Hill, Quambatook, Robinvale, Sea Lake, Serpentine, Swan Hill, Wakool, Wedderburn and Wycheproof.

Waste Oil - Triple R Waste Oil (03 9369 0455) services the Central Murray region regularly, and will collect waste oil from your farm free of charge if it exceeds 600 litres (3 X 44 gallon drums) or from a group of neighbouring farms where the total is more than 600 litres. Waste Oil facilities also exist at Donald, Boort, Manangatang, Sea Lake, Koraleigh, Moulamein, Cohuna, Barham, Wedderburn, Inglewood, Swan Hill, Birchip Pyramid Hill, Newbridge, Kerang & Robinvale landfills/transfer stations during opening hours.

Household recyclables - most Council Landfills/Transfer Stations have free drop-off areas for paper & cardboard, glass bottles/jars, plastics (codes 1 to 7), aluminium/steel cans, and milk/juice cartons.